

# 2020 Bike Program Update

CSCC

15 September 2020

Kate Brady



# Summary

- Policies
- Crossings
- Bike Lanes
- Public Engagements in process
- Grants

# Policies

- Complete Streets
- Midblock Trail Crossings
- ConnectCOS

# Crossings

- Shooks Run Trail @ Fontanero
- Connector Trail @ Briargate
- Sand Creek Trail @ Chelton
- Contrails Trail @ Rangewood
- Rock Island Trail @ Paseo
- Sand Creek Trail @ Hancock

# Shooks Run Trail @ Fontanero





# Connector Trail @ Briargate



< Mon Apr 6 2020 >





# Connector Trail @ Briargate



< Wed Sep 2 2020 >





# Connector Trail @ Briargate





# Sand Creek Trail @ Chelton



< Mon Aug 31 2020 >



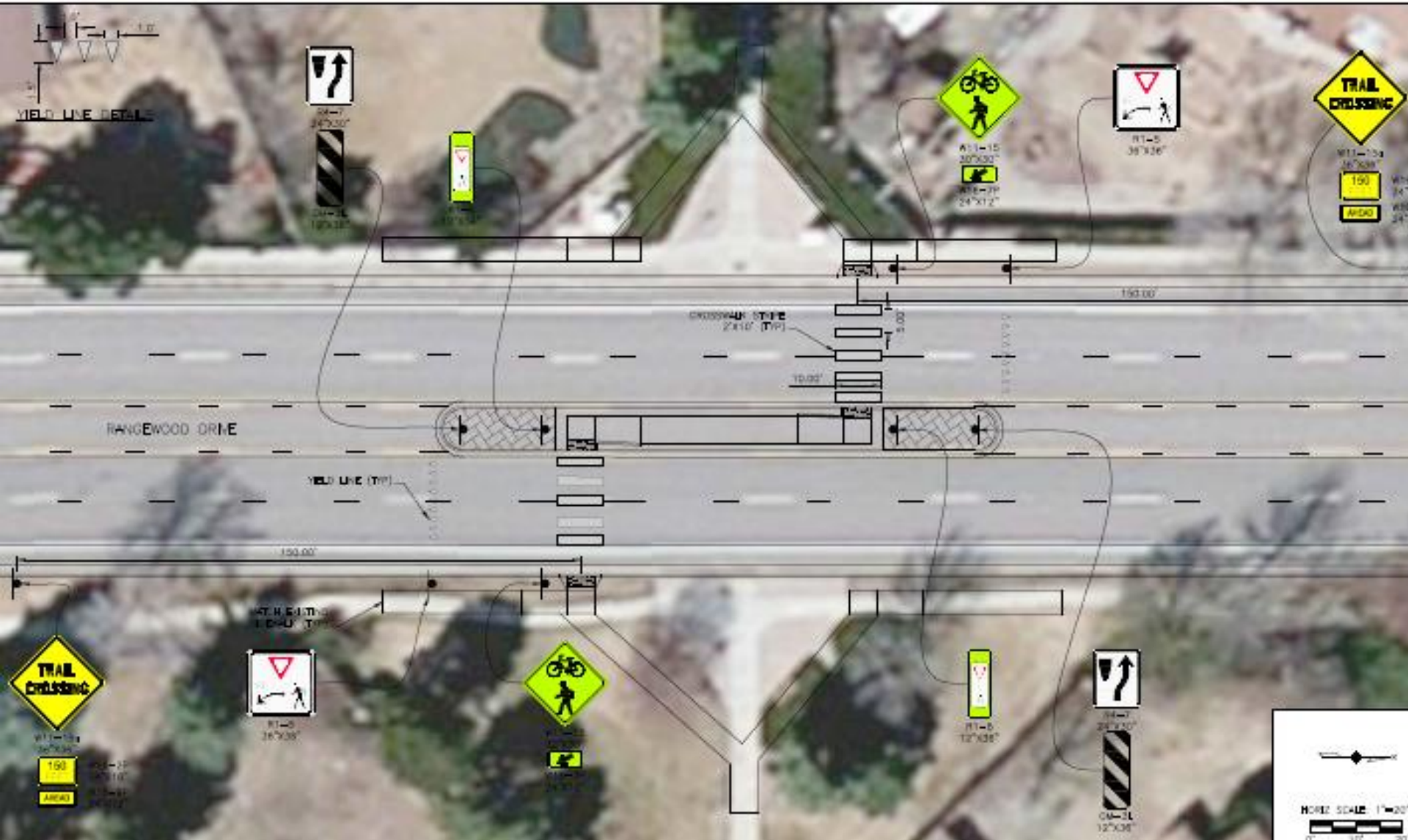


# Contrails Trail @ Rangewood





# Conrails Trail @ Rangewood

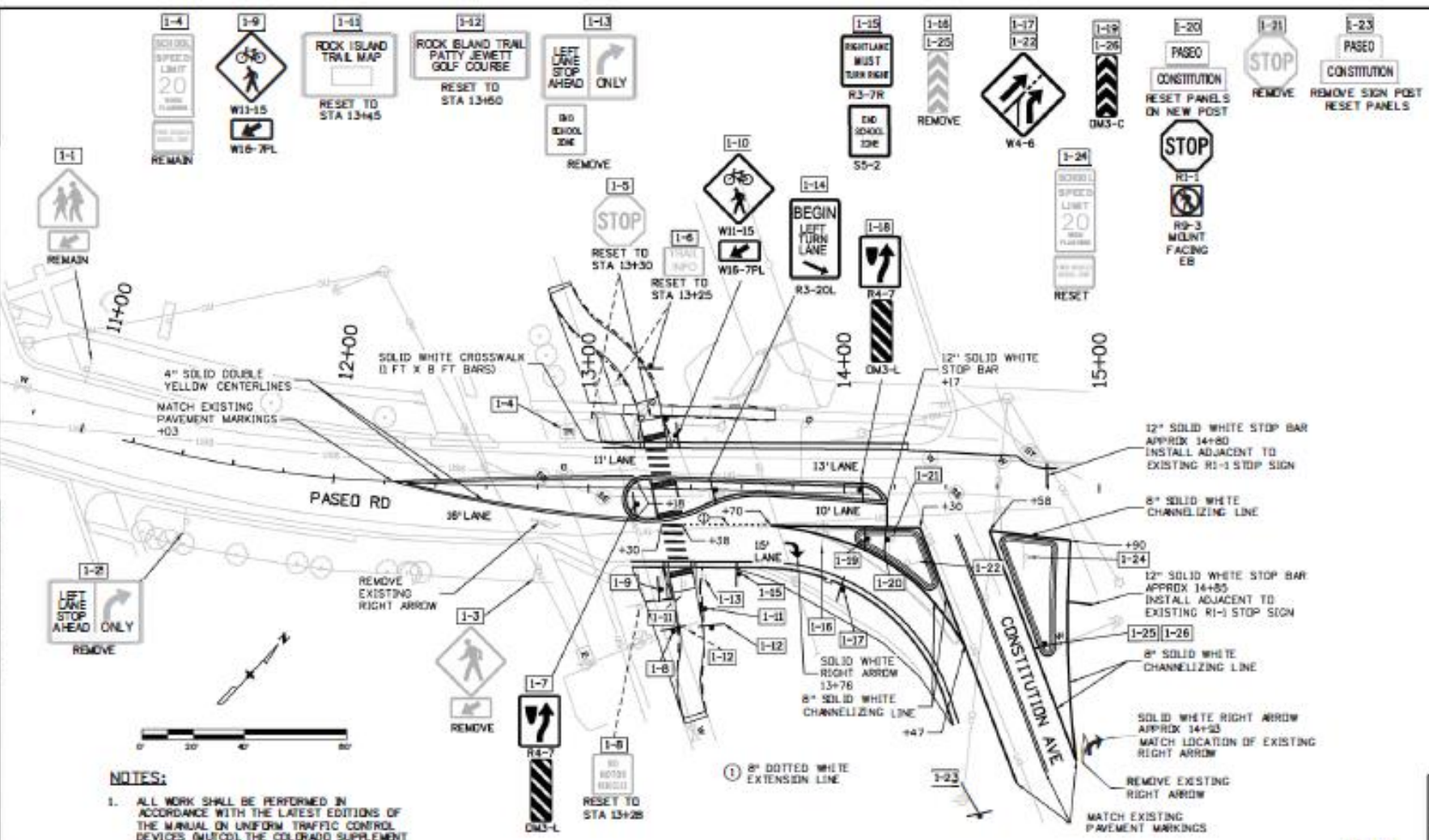




# Rock Island Trail @ Paseo







**NOTES:**

- ALL WORK SHALL BE PERFORMED IN ACCORDANCE WITH THE LATEST EDITIONS OF THE MANUAL ON UNIFORM TRAFFIC CONTROL DEVICES (MUTCD), THE COLORADO SUPPLEMENT TO THE MUTCD, AND THE CITY OF COLORADO SPRINGS TRAFFIC ENGINEERING SIGNAGE & PAVEMENT MARKING GUIDELINES.
- SIGNS NOT IDENTIFIED ON THESE PLANS ARE TO REMAIN IN PLACE.





# Sand Creek Trail @ Hancock







# Bike Lanes

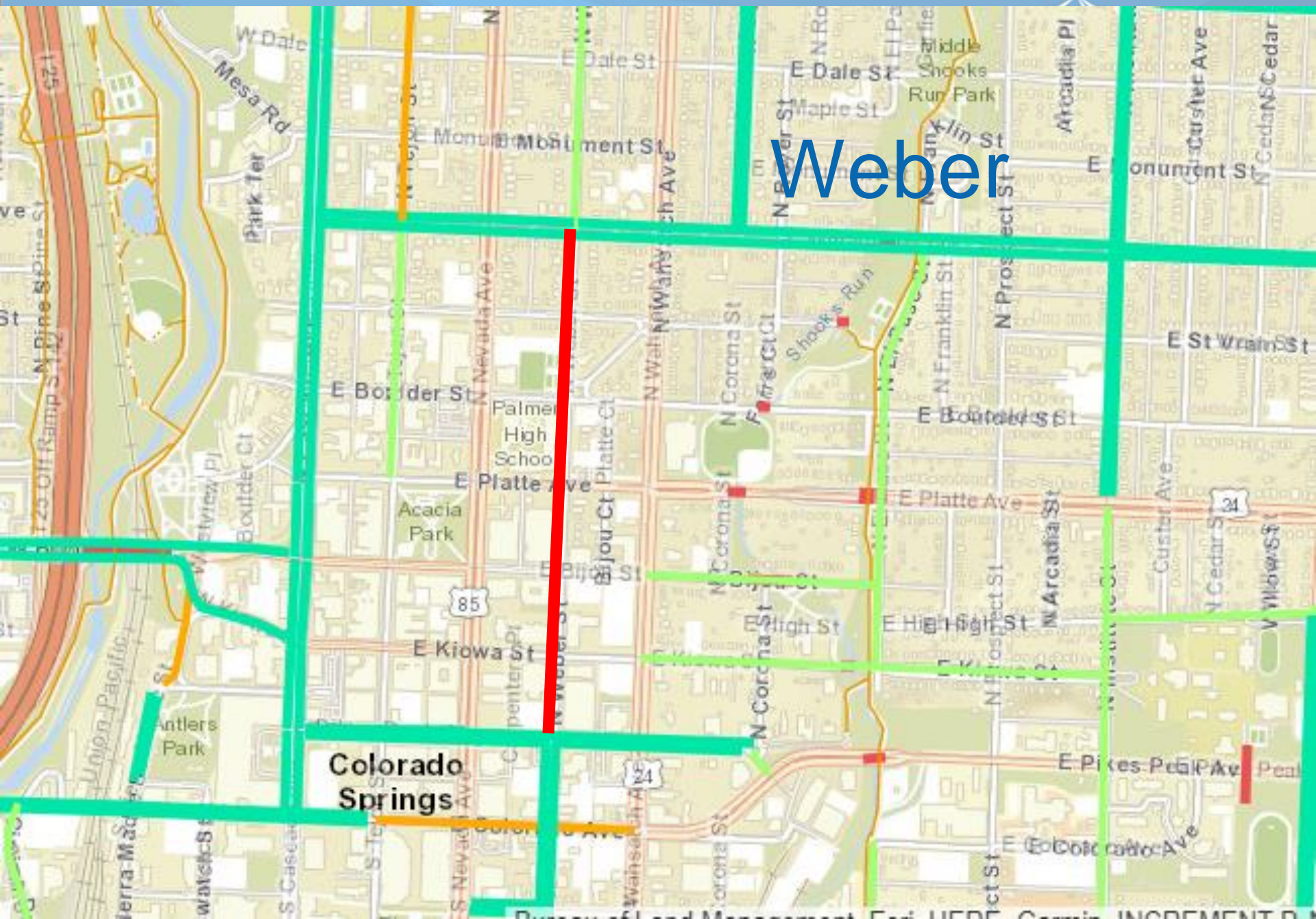


- Weber
- Cascade
- Jet Wing
- Van Buren
- Mesa
- Meadowland
- Improvements



Weber

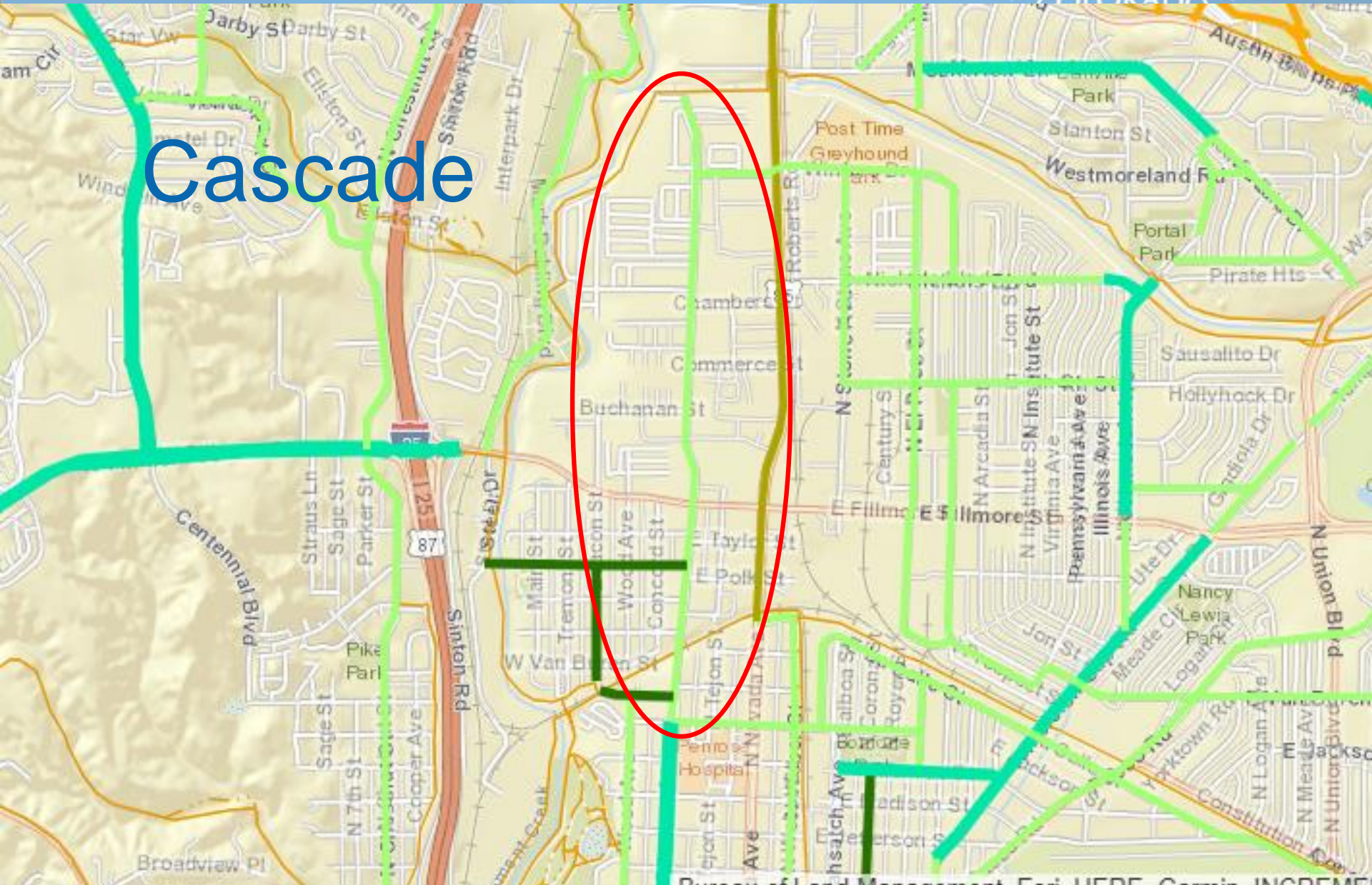
Colorado Springs





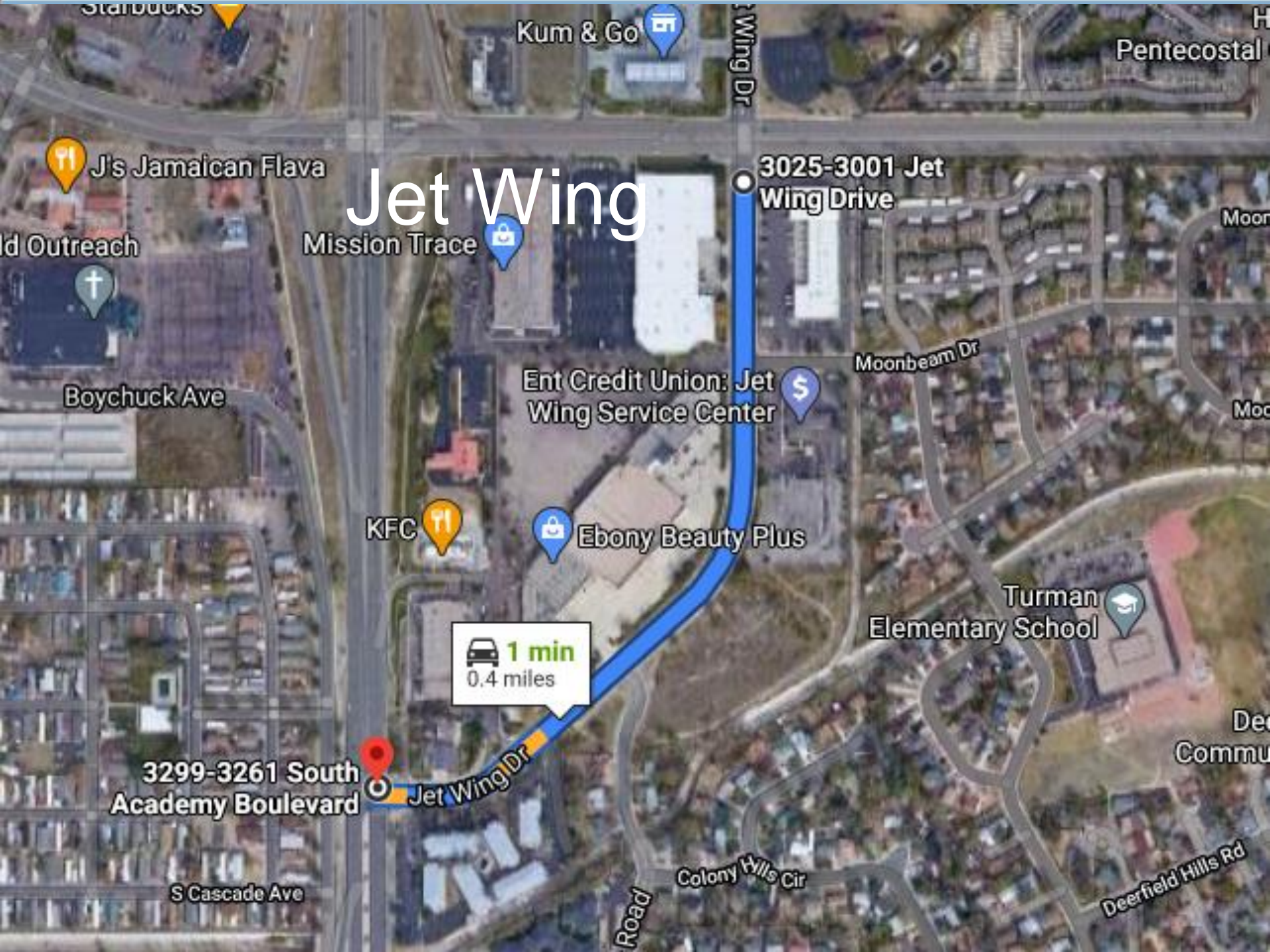


# Cascade





# Jet Wing



J's Jamaican Flava

Kum & Go

3025-3001 Jet Wing Drive

Mission Trace

Ent Credit Union: Jet Wing Service Center

Boychuck Ave

KFC

Ebony Beauty Plus

Turman Elementary School

3299-3261 South Academy Boulevard

Jet Wing Dr

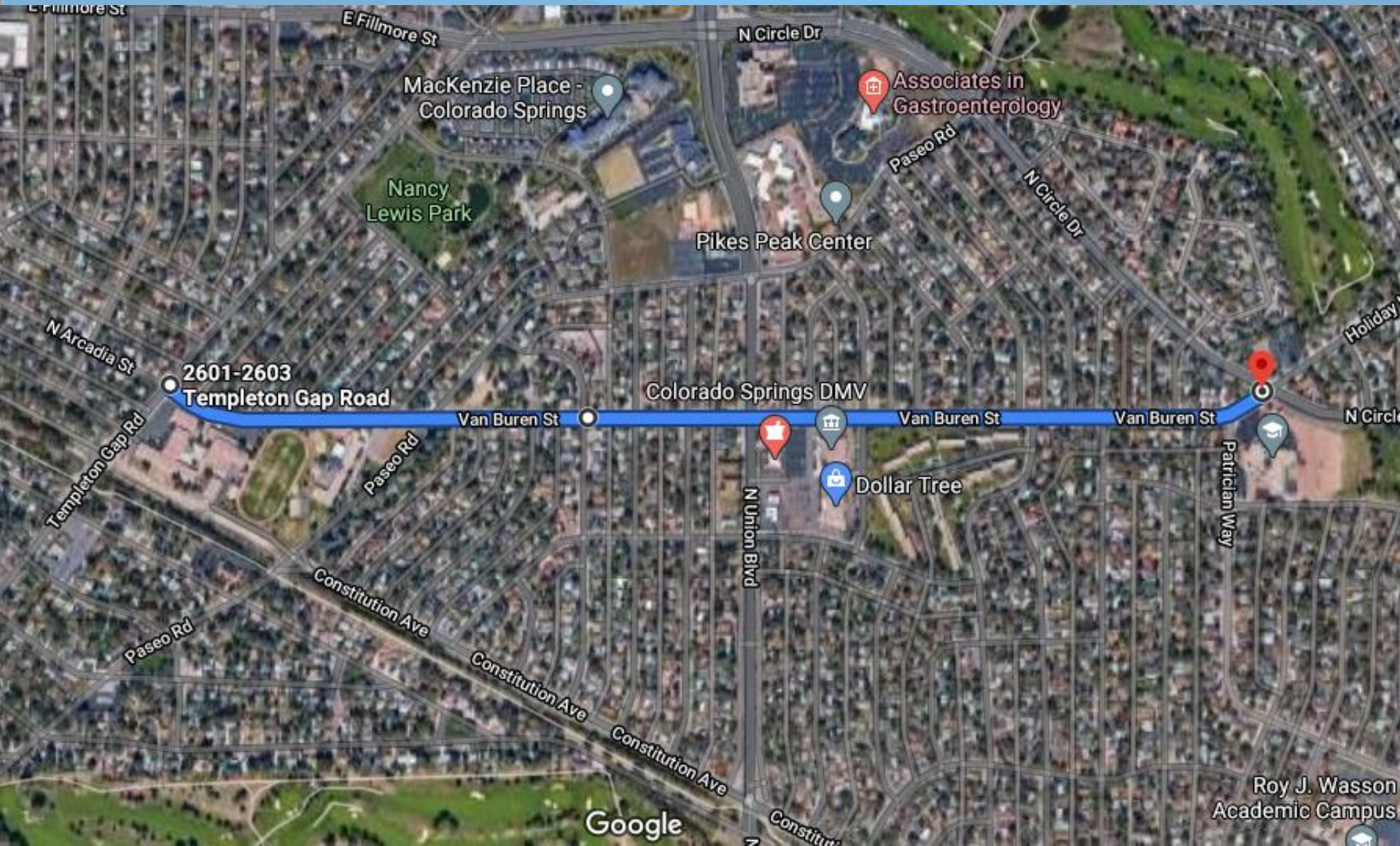
S Cascade Ave

Colony Hills Cir

Deerfield Hills Rd

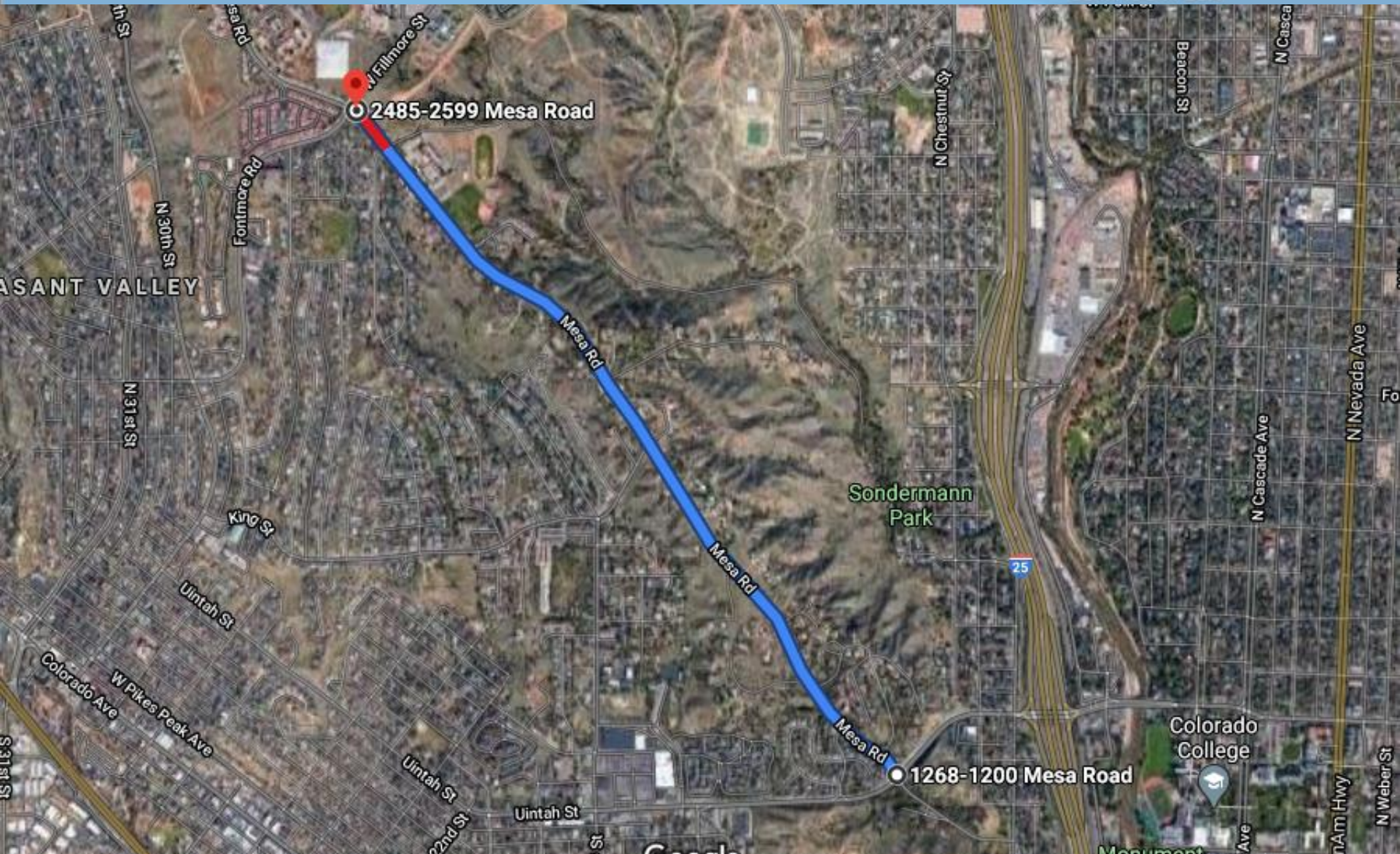


# Van Buren



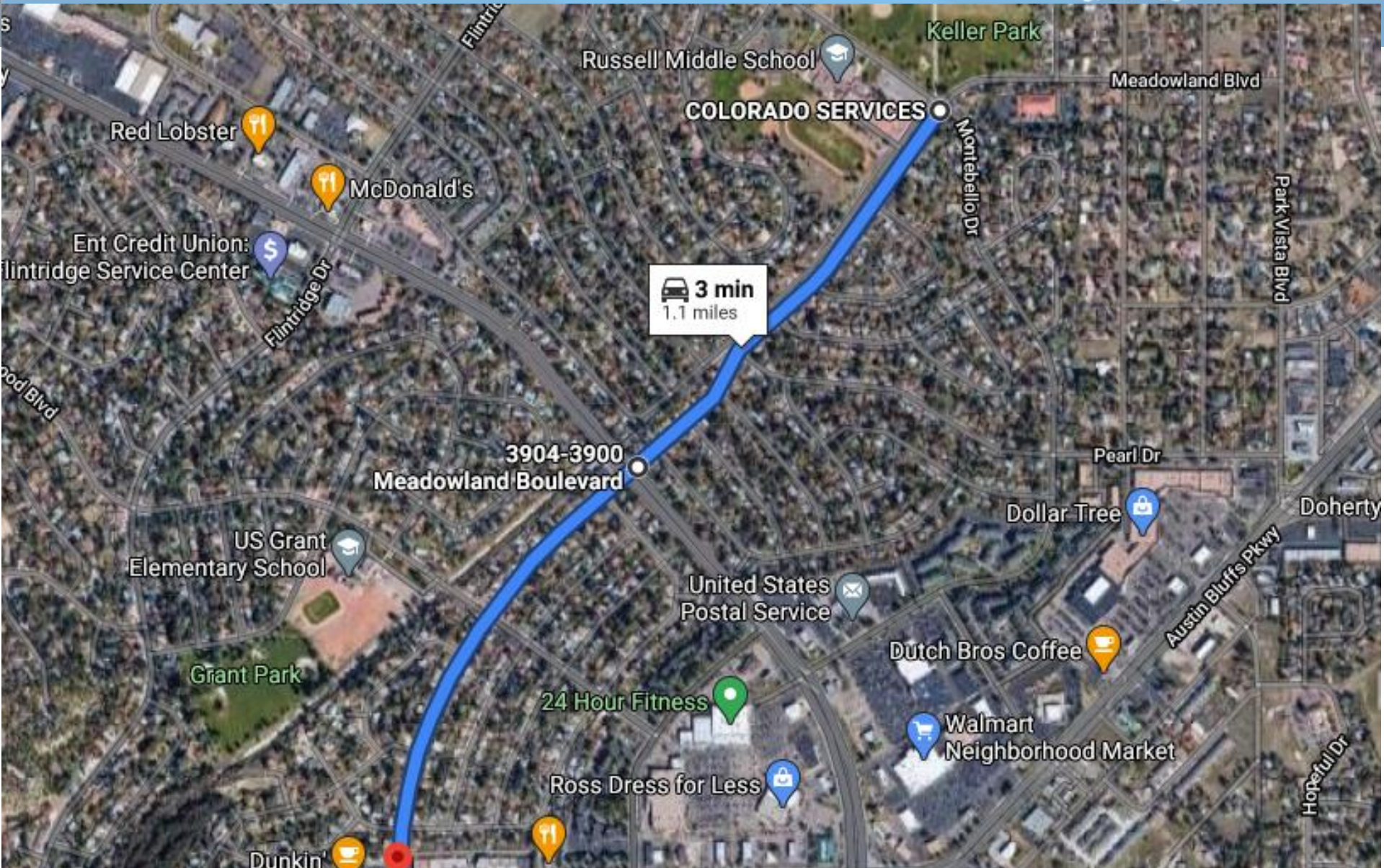


# Mesa Rd





# Meadowland





# Intersection Improvements



- Mesa @ Fillmore
- Jet Wing @ Fountain
- Vickers @ Academy
- Flintridge @ Academy



## Analyses or Public Engagements in Process

- Chelton & Hancock
  - Update
- Cascade Ave Downtown
  - Colorado to Rio Grande

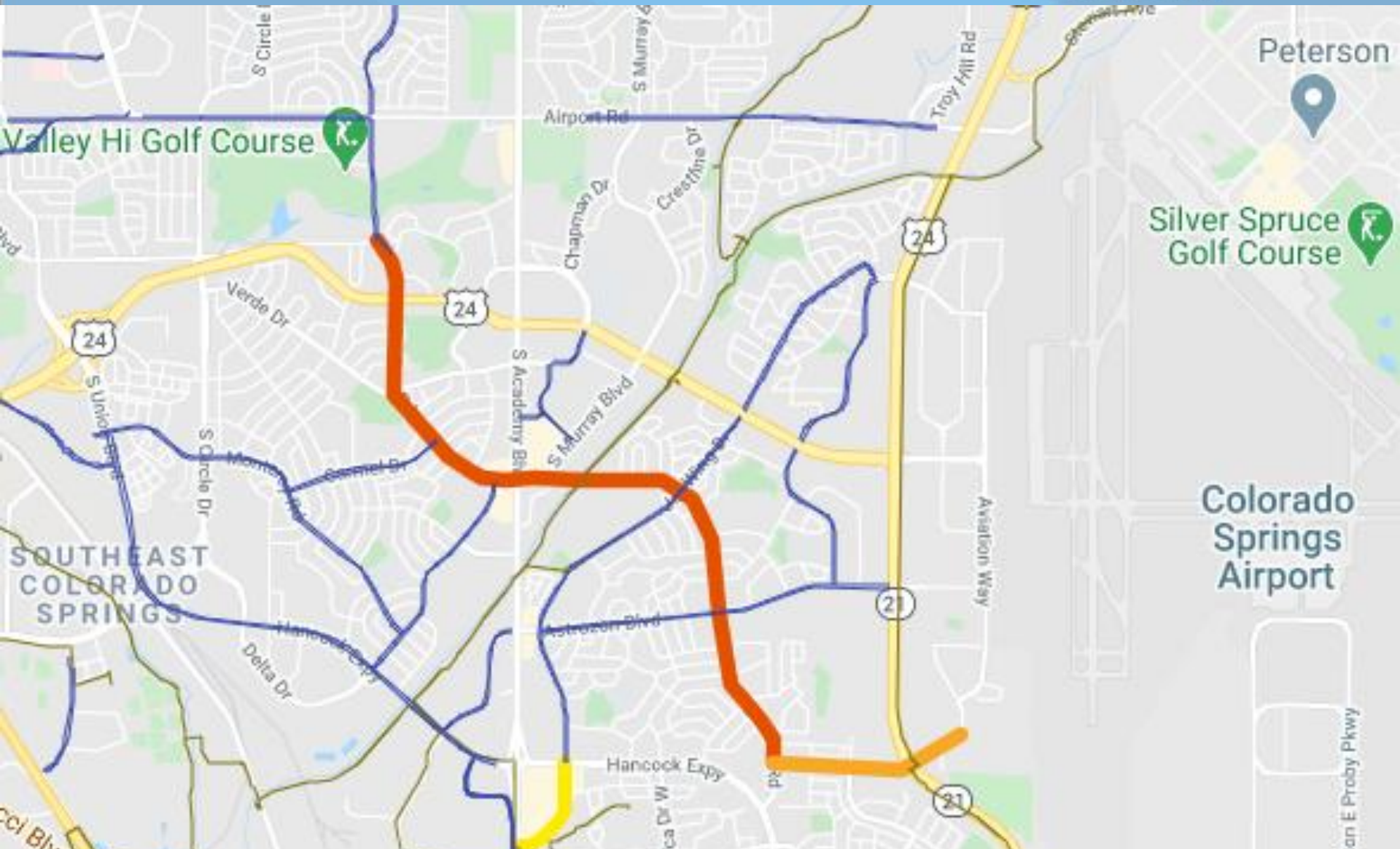


# Grants--\$664.5M granted

- PikeRide Station Expansion
- 31<sup>st</sup> & Pikes Peak Signalized Crossing
  
- Shooks Run Trail @ Uintah crossing
  - (plus short stretch of trail)
- Dublin Park Trail @ Dublin
- Rock Island Trail @ Murray



# Chelton & Hancock



# Cascade Ave SW Downtown





# Cascade Ave SW Downtown





# Questions

Kate Brady

Sr Bicycle Planner

Public Works

[Katherine.brady@coloradosprings.gov](mailto:Katherine.brady@coloradosprings.gov)

719.385.5437